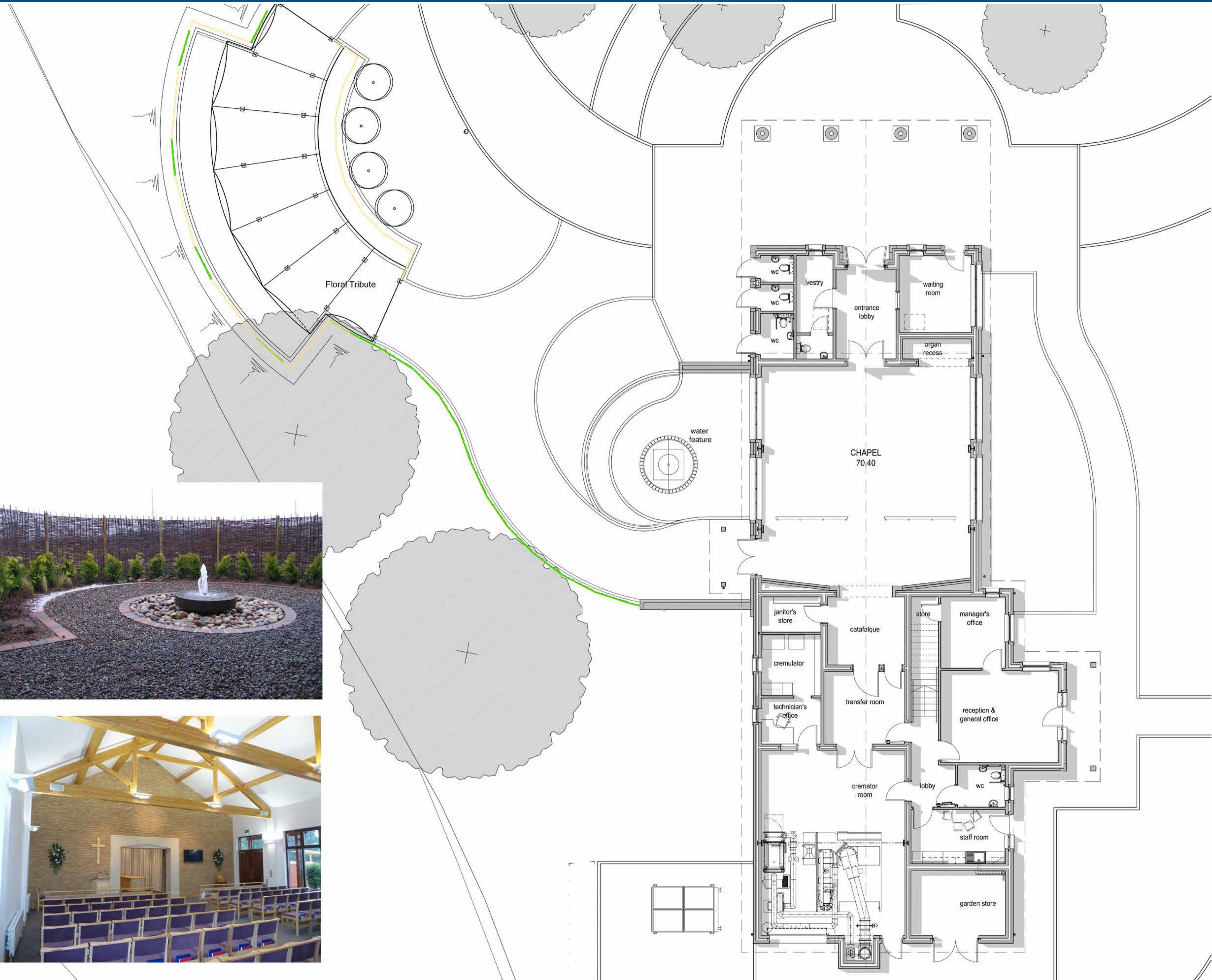


- 1. Crematorium Building
- 2. Floral Tribute
- 3. Garden of Remembrance
- 4. Crematorium Parking - 66 Spaces
- 5. Staff Parking - 5 Spaces
- 6. Cemetery Burial Areas - 3.85 acres
- 7. Mausoleum Complex

- 8. Pond
- 9. Customer Parking - 14 Spaces, WC & Service Yard
- 10. Proposed Bridge over Woollens Brook
- 11. Acoustic Barrier to reduce traffic noise
- 12. Children's Burial Area
- 13. Memorial Woodland







South Elevation
1 : 100



North Elevation
1 : 100



West Elevation
1 : 100



East Elevation
1 : 100



PERSPECTIVE VIEW 1



PERSPECTIVE VIEW 2